



Shane Rattenbury MLA

MINISTER FOR TERRITORY AND MUNICIPAL SERVICES
MINISTER FOR CORRECTIVE SERVICES
MINISTER FOR ABORIGINAL AND TORRES STRAIT ISLANDER AFFAIRS
MINISTER FOR SPORT AND RECREATION

MEMBER FOR MOLONGLO

Mr Tom Duncan
Clerk
ACT Legislative Assembly
London Circuit
CANBERRA ACT 2601

Dear Mr ^{Tom}Duncan

I refer to your letter of 30 October 2014 about petition No 17-14 lodged by Mrs Giulia Jones MLA and received in the Assembly on 30 October 2014

My response to this petition for tabling is at Attachment A.

Yours sincerely

Shane Rattenbury MLA
Minister for Territory and Municipal Services

02 DEC 2014

ACT LEGISLATIVE ASSEMBLY

London Circuit, Canberra ACT 2601 GPO Box 1020, Canberra ACT 2601
Phone: (02) 6205 0005 Fax: (02) 6205 0007 Email: rattenbury@act.gov.au
Facebook: shanerattenburymla Twitter: @ShaneRattenbury



PETITION No 17-14 TO THE LEGISLATIVE ASSEMBLY OF THE AUSTRALIAN CAPITAL TERRITORY LODGED BY MRS GIULIA JONES MLA ON 30 OCTOBER 2014.

REGARDING:

Petition: Provide a footpath on Tarraleah Crescent Lyons.

The petition from Mrs Jones MLA of the Australian Capital Territory brings to the attention of the Legislative Assembly a request to provide a footpath on Tarraleah Crescent near the Lyons Early Childhood Centre. Pedestrians are currently forced to walk on the road and face considerable safety risks while accessing the school and a footpath will minimise this risk.

Response:

Walking and Cycling play an important role in the Government's initiatives of Transport for Canberra and the Zero Growth – Healthy Weight Strategy to reduce obesity.

Roads ACT receives many requests each year for the construction of community paths to provide improved connectivity within the community path network. To provide consistency and transparency to the assessments of path construction priority, all walking and cycling requests are assessed utilising a community path warrant system developed in conjunction with cycling advocacy groups, namely Pedal Power and the Heart Foundation through the Bicycle Advisory Group.

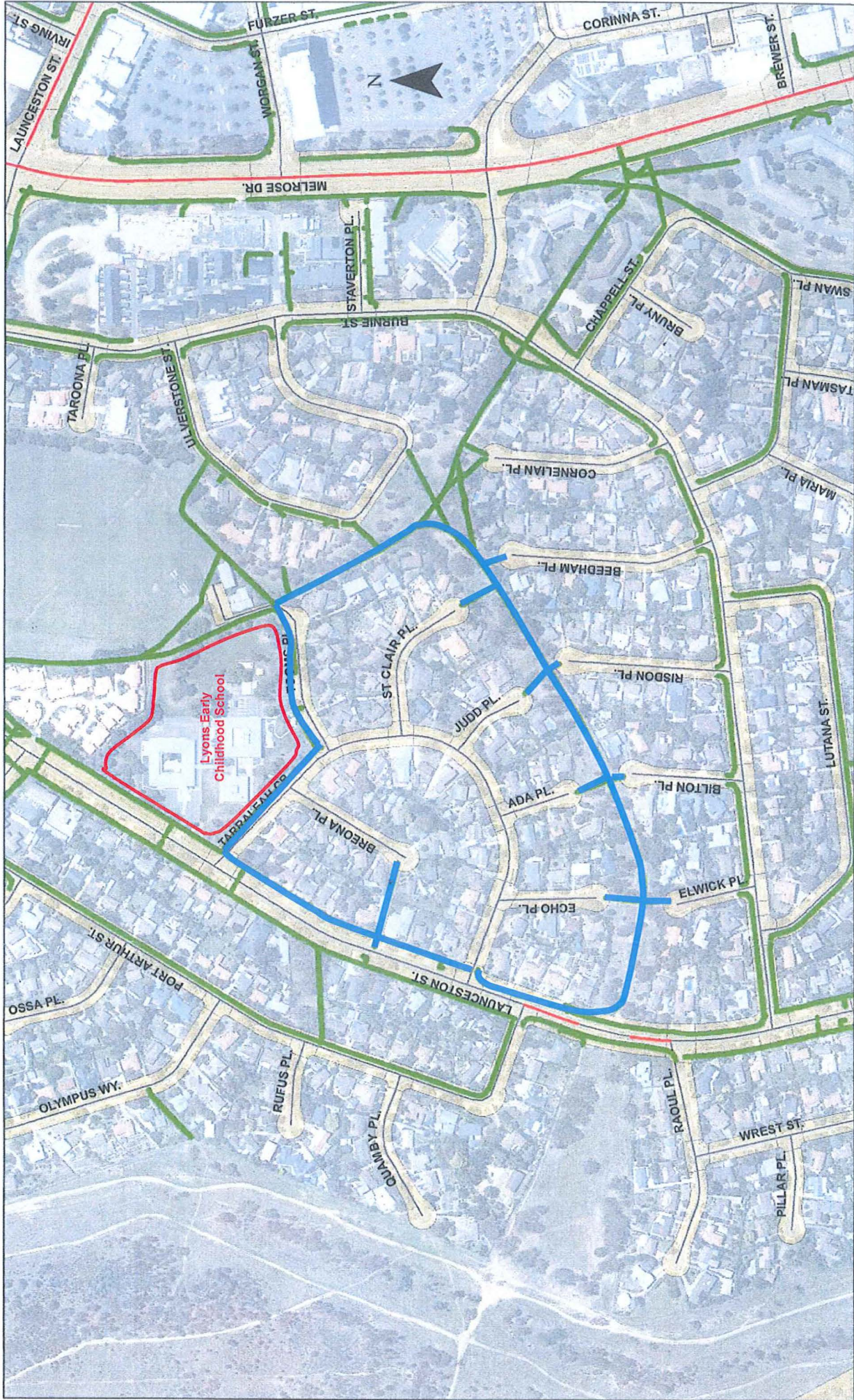
The warrant system utilises a five criteria assessment methodology:

1. Is the requested path safe? If it is not, then if possible are there alternative routes identified.
2. The request is then assessed against routes identified in the ACT Strategic Cycling Network plan which outlines the priority improvement corridors, connections to the proposed surrounding network and its value within the network.
3. The community value of the potential path. Assesses its ability to improve connectivity to surrounding community facilities for example, schools, community centres and shops.
4. Connectivity of the potential path with the surrounding public transport network, specifically improved access to bus stops.
5. Is there a recognised desire line, 'goat track' or reported usage.

The proposal to construct an extension of the community path from the southern end of Tarraleah Crescent to connect into the existing path along Tarraleah Crescent servicing the early learning centre has been assessed and is currently ranked at 113 out of 235 when compared to other community path requests as of September 2014.

The community path has been added to the Roads ACT Community Path Database and will be considered in future capital works programs, subject to available funding and other competing priorities.

There is currently a safer alternative route than the roadway which is the community path that serves all the street Places connecting to Tarraleah Crescent through the open space spine to Tooms Place servicing the early learning centre as shown in Attachment B.



W&C maps
EARLY CHILDHOOD
LYONS

- Legend
- Alternative route using existing community paths
 - Existing community paths